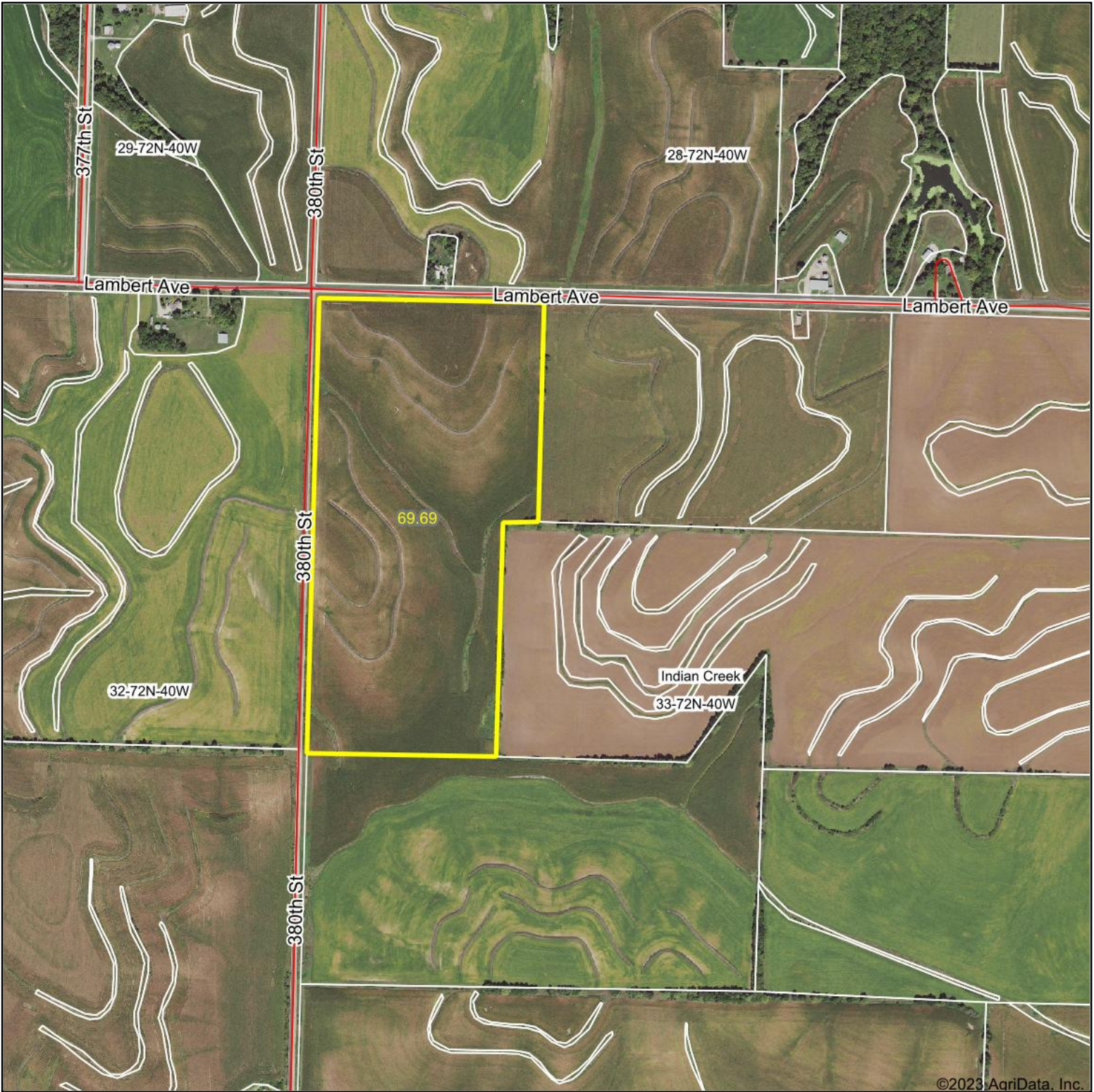


# Aerial Map



Boundary Center: 40° 59' 53.52, -95° 27' 30.61



**33-72N-40W**  
**Mills County**  
**Iowa**



Maps Provided By:  
  
CUSTOMIZED ONLINE MAPPING  
© AgriData, Inc. 2023      www.AgriDataInc.com

8/22/2023