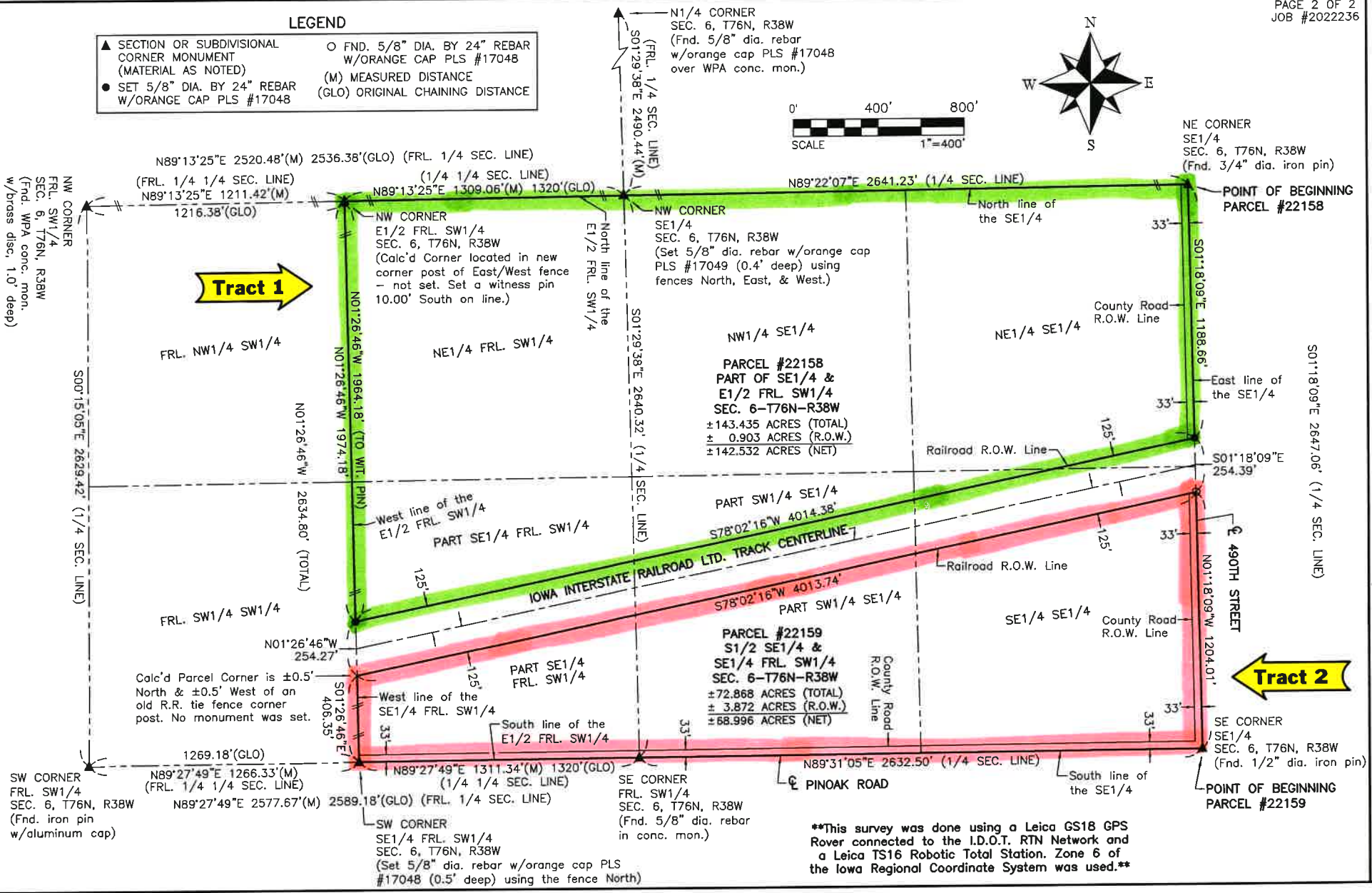
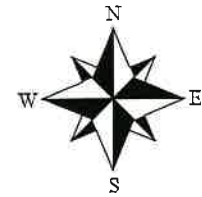
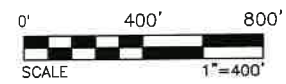


WILKE LAND SURVEYING INC. - 401 1800TH ST. PANAMA, IOWA 51562 - PHONE (712)489-2898 CELL (712)579-0551

LEGEND

- ▲ SECTION OR SUBDIVISIONAL CORNER MONUMENT (MATERIAL AS NOTED)
- SET 5/8" DIA. BY 24" REBAR W/ORANGE CAP PLS #17048
- FND. 5/8" DIA. BY 24" REBAR W/ORANGE CAP PLS #17048
- (M) MEASURED DISTANCE
- (GLO) ORIGINAL CHAINING DISTANCE



****This survey was done using a Leica GS18 GPS Rover connected to the I.D.O.T. RTN Network and a Leica TS16 Robotic Total Station. Zone 6 of the Iowa Regional Coordinate System was used.****